

WALKER

Accessible Wayfinding to the Walker's McGuire Theater

Rosy Simas: A:gajë:gwah dësa'nigöëwë:nye:'
(i hope it will stir your mind) May 13 – 16

Arriving at the Walker

Parking in the Ramp

Accessible parking is available at Vineland Place Parking Ramp with a direct connection to the Walker Art Center. Note that the parking ramp entrance is 8 feet 2 inches high. For vehicles larger than this height, we recommend the surface lot, which is adjacent to the Minneapolis Sculpture Garden. There are 13 accessible parking spots on the P1 level of the ramp. Eleven of these spots have an adjacent loading area. Visitors can pay for parking at the gate when they leave the ramp or at a kiosk in the P1 corridor. Parking in the ramp costs \$8.



Metered On-Street Parking

Vineland Place parking meters provide four-hour options for vehicles with disability license plates or certificates for 50 cents an hour. The nearest parking meters to the main entrance are on the north side of Vineland Place, to the west of the main entrance.

Accessible Transportation Dropoff

Services such as Metro Mobility should be instructed to drop off and pick up passengers at 725 Vineland Place. There is a disability transfer zone to the west of the main entrance.

Wayfinding from the Parking Ramp

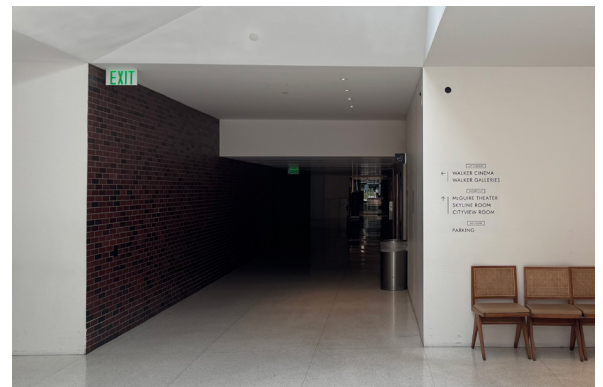
Once inside the Parking Garage, there is a bank of elevators located on the blue wall that is accessible through a glass door with a push button automatic door opener.

If you received a ticket via email, take the elevator to the Cityview Room on Level 2, where you will be entering the McGuire Theater for this performance. To pickup tickets, take the elevator to the box office on level L. Staff will be available for additional assistance.

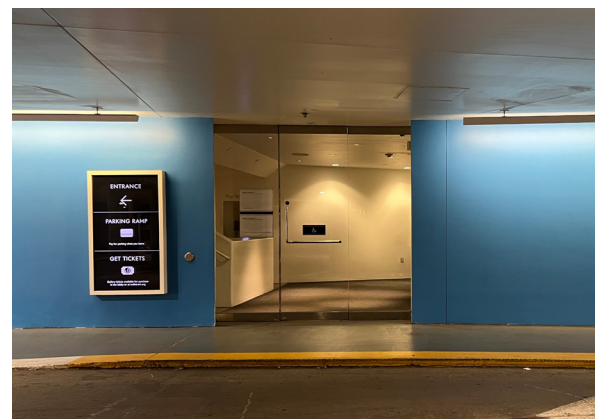


Wayfinding from the Main Entrance on Vineland Place (across from the Minneapolis Sculpture Garden)

A push button automatic door opener on the far left side next to the yellow wall opens to a long hallway between the Walker's Main Lobby and Cardamom Restaurant.



Continue down that corridor into the Parking Ramp. Once inside the Walker Parking Garage, follow the blue wall on your left to a bank of elevators accessible through a glass door with push button automatic door opener. If you received a ticket via email, take the elevator to the Cityview Room on Level 2, where you will be entering the McGuire Theater for this performance. To pick up tickets, take the elevator to the box office on level L. Staff will be available for additional assistance.

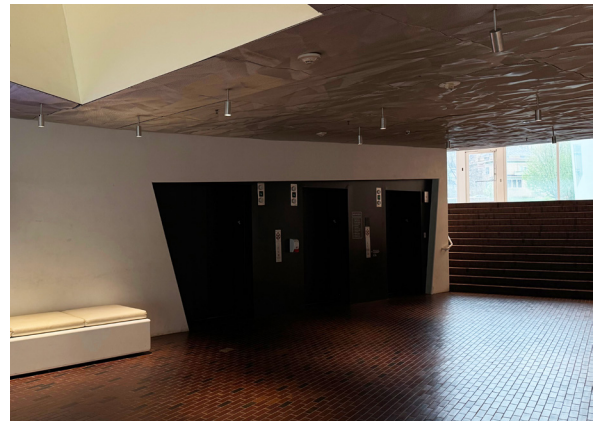


Wayfinding from the Hennepin Avenue Entrance

A glass door with a push button automatic door opener opens to the lobby area adjacent to the Idea House 3 design store. Just past Idea House 3 is a bank of elevators.



To pick up tickets, visit the box office across from the bank of elevators. If you received a ticket via email, take the elevator to the Cityview Room on Level 2, where you will be entering the McGuire Theater for this performance. Staff will be available for additional assistance.



Restrooms

There are gendered multi-stall restrooms with accessible stalls on Level M (Mezzanine) and Level 2 (Cityview Room) in the section of the building that houses the McGuire Theater and Idea House 3. These restrooms have manual doors. There is a single-user accessible restroom on the 5th floor.